

## Follow up to: Ice Age Animals in SW United States Rock Art

The Shaman's Gallery panel in the Grand Canyon, with possible depiction of events leading to the extinction of the Clovis/Folsom people

By: Ray Urbaniak

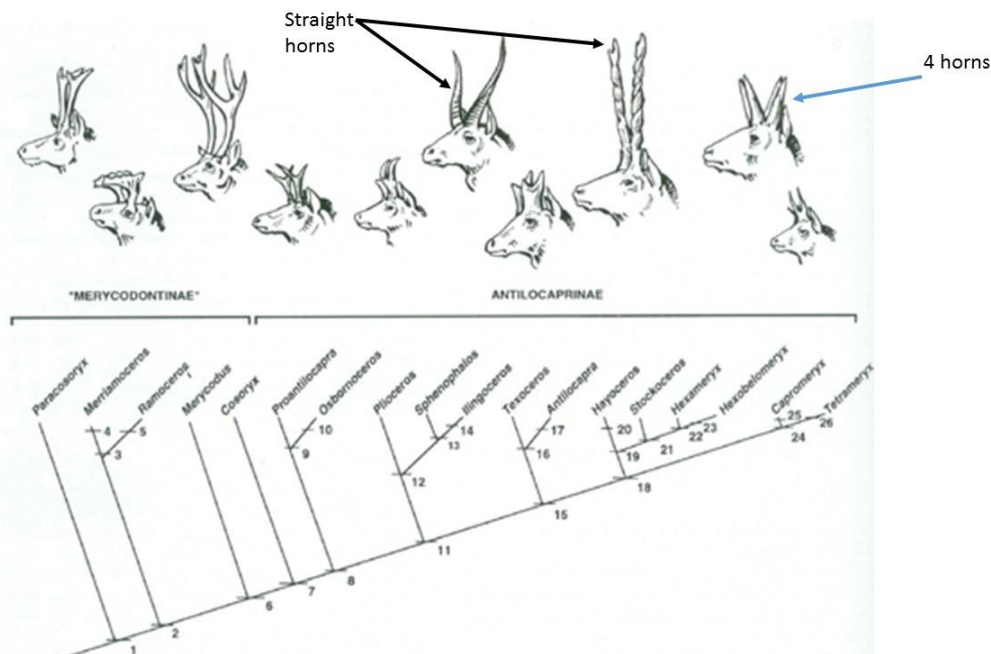


In my article on Ice Age Animals in SW Rock Art I showed a number of petroglyphs of extinct animals that were depicted in rock art in SW Utah and the Arizona strip. One of those images was that of an extinct pronghorn antelope which is supported by the pronghorn antelope fossil record in the Americas.

## Extinct Pronghorn



While reviewing my photos for this article I noticed a pronghorn petroglyph I had missed in my initial Ice Age Animals in Rock Art article. The petroglyph of a 4 horned pronghorn antelope is on a very old petroglyph panel in SW Utah. It depicts another extinct pronghorn of The Americas pictured in the chart below pointed to with one blue arrow.



Used with permission Cambridge University Press  
 Evolution of Tertiary Mammals of North America, vol. 1

<http://scienceblogs.com/tetrapodzoology/2010/07/21/release-the-fossil-pronghorns/>



Extinct pronghorn with 4 horns      Photo of the surviving pronghorn

A friend of mine, Sue Reynolds, invited me along on a hike to the Shaman's Gallery in the Grand Canyon in October, 2014. The Shaman's Gallery is an extremely old pictograph panel. The hike is very strenuous and unfortunately, I was not able to go.

Sue Reynolds, who is a rock art photographer and is also a strong hiker with excellent survival skills, took the most detailed photos of this panel I have seen and shared them with me. Sue is planning to return in the Spring 2015 for a more detailed surveillance of the area.



*Shaman's Gallery photos by: Sue Reynolds*



*The Shaman's Gallery/Sue Reynolds*





*A portion of the Shaman's Gallery/Sue Reynolds*

After close examination of the photos I found one pictograph of an **extinct pronghorn**. This is the only **pictograph**(painted with pigments verses pecked into the rock face like a petroglyph) I have never identified of an ice age animal in this SW area. The pictograph of the pronghorn had a white sheep painted on top of it, but most of the sheep image, pictured below, has eroded away with time (the curved horns are the primary remaining feature of the white big horned sheep).



*Image enhanced of extinct pronghorn antelope/Sue Reynolds*

(see pronghorn fossils with 2 black arrows in chart of extinct pronghorns)

There are only a few animal images on this Grand Canyon pictograph panel. Most of the other images are probably shamanistic trance images.

Some people have said these cave paintings are as old as 20,000 years, and they may be, but I have not found a reference as to how they derived this figure. I can however, support the fact that they do date back at least approximately 13,000 years to pre-ice age times due to the presence of the image of an extinct pronghorn species on the pictograph panel (similar to what I previously photographed on a petroglyph panel in my 2013 article). This Grand Canyon pictograph of a now extinct pronghorn is supported by the fossil record as well by the presence of Clovis and Folsom point artifacts found in the Grand Canyon.

The Clovis/Folsom people were in the Grand Canyon area per the following Arizona State University quote.

⦿ *"First found embedded in the bones of a bison known to have been extinct for 10,000 years, the Folsom Point provides direct evidence of human activity in the canyon during that time. A Folsom Point was found in the canyon's Nankoweap area in 1993. The large Clovis Point most likely was used to hunt mammoth and other large animals."*



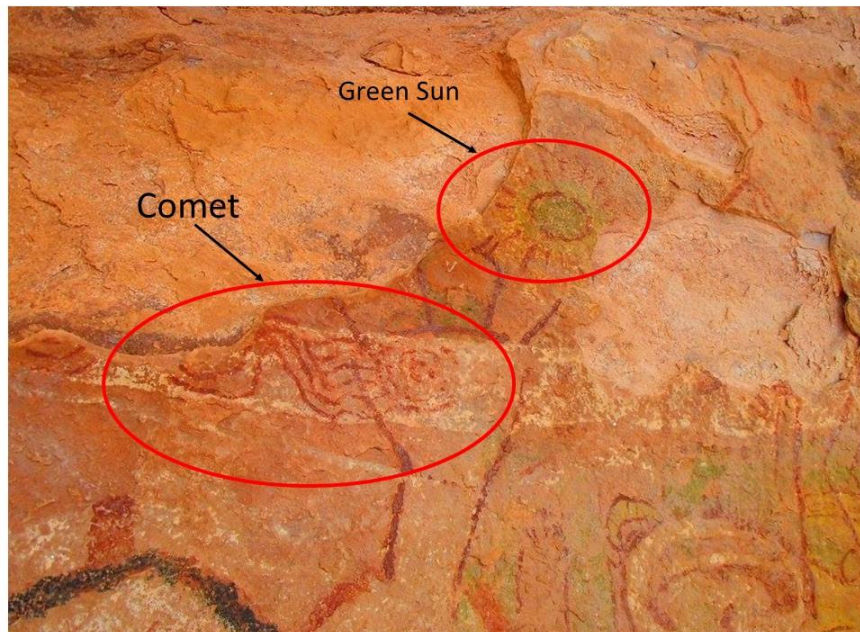
[http://grandcanyonhistory.clas.asu.edu/K12\\_pdfs/Early%20Artifacts%20of%20Grand%20Canyon.pdf](http://grandcanyonhistory.clas.asu.edu/K12_pdfs/Early%20Artifacts%20of%20Grand%20Canyon.pdf)

The Clovis /Folsom people are known for their finely crafted, distinctive points, and they occupied this area of the Grand Canyon some 13,000 years ago.

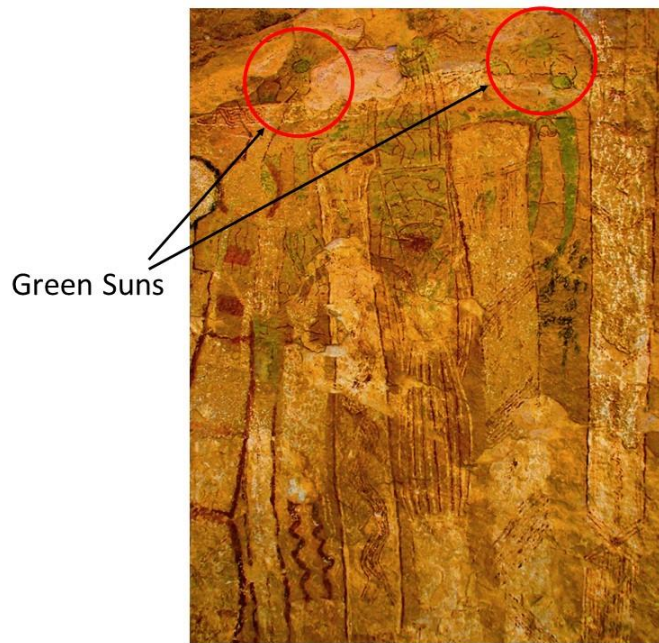


Another intriguing image from this panel (pictured below) shows what appears to be a comet, meteor or asteroid as well as 2 Green Suns with other green areas below. (2 photos below)

The first image shows a comet depiction image with a Green Sun to the upper right. The second enhanced photo shows the 2 Green Suns.



*Comet looking image with green Sun to the upper right of it. /Sue Reynolds*



*Enhanced photo showing 2 Green Suns(top of photo) and other green highlights/Sue Reynolds*

I had never seen a Green Sun before in Native American Rock Art during my many years of research in the SW USA, let alone 2 Green Suns in rock art!

After much speculation based on the time period, I remembered a theory about an asteroid striking the earth nearly 13,000 years ago resulting in the extinction of the Clovis people(links below).

🕒 *"In 2007, a team of scientists led by Richard Firestone of the Lawrence Berkeley National Laboratory in California suggested these changes were the result of a collision or explosion of an enormous comet or asteroid, pointing to a carbon-rich black layer at a number of sites across North America. The theory has remained controversial, with no sign of a crater that would have resulted from such an impact."*  
*"Comet impacts may be low enough in density not to leave craters," Firestone told LiveScience by email.*

[http://www.huffingtonpost.com/2013/03/01/comet-clovis-culture-archaeologists-ancient-impact\\_n\\_2792050.html](http://www.huffingtonpost.com/2013/03/01/comet-clovis-culture-archaeologists-ancient-impact_n_2792050.html)

By: Nola Taylor Redd, LiveScience Contributor

Published: 03/01/2013 11:54 AM EST on LiveScience

**Some people have refuted this, but more recent studies support it (links below).**

🕒 *"(Santa Barbara, Calif.) — An 18-member international team of researchers that includes James Kennett, professor of earth science at UC Santa Barbara, has discovered melt-glass material in a thin layer of sedimentary rock in Pennsylvania, South Carolina, and Syria. According to the researchers, the material — which dates back nearly 13,000 years — was formed at temperatures of 1,700 to 2,200 degrees Celsius (3,100 to 3,600 degrees Fahrenheit), and is the result of a cosmic body impacting Earth."*

<http://www.ia.ucsb.edu/pa/display.aspx?pkey=2748>

**Study Jointly Led by UCSB Researcher Finds New Evidence Supporting Theory of Extraterrestrial Impact**

🕒 *"Scientists have found compelling evidence that a meteorite storm hit the earth more than 12,000 years ago, and is likely to have been responsible for the extinction of a prehistoric people and giant animals including mammoths.*

*Evidence of the meteorite's intense heat was found on two continents. The researchers believe the huge cosmic impact triggered a vicious cold snap, which caused widespread destruction.*

*The international team found a substance known as melt glass, which forms at temperatures of 1,700 to 2,200 degrees Celcius and can result from a 'cosmic body' hitting the earth."*

<http://www.dailymail.co.uk/sciencetech/article-2158054/Scientists-discover-evidence-meteorite-storm-hit-Earth-13-000-years-ago-killed-prehistoric-civilisation.html>

*Meteorite storm 'smashed the Earth 12,000 years ago and killed off a prehistoric people'*

It would also be worthwhile to look for melt glass near this pictograph site as described in the above article, "The international team found a substance known as melt glass, which forms at temperatures of 1,700 to 2,200 degrees Celcius and can result from a 'cosmic body' hitting the earth."

I then speculated that such an extra-terrestrial object could have caused an earthquake with associated earthquake lights, either by impact or explosion in the atmosphere (links below). There is a major fault line only 7 miles west of this site. The Lights could have been observed there and recorded later on this Shaman panel.

🕒 *"A new study, published in the journal Seismological Research Letters, has examined 65 cases of earthquake lights over the past 400 years and found the overwhelming majority (97 percent) occurred along faults on continental plates. According to Discovery News, the research shows the flashes of electricity tend to happen at rifts, where the Earth's crust is pulling itself apart:"*

*Pat Mitchell*

*AUG 24, 2014 at 10:50 AM*

*"I live in Santa Rosa, 40 mile north of San Francisco and I have seen the green lights and flashes of white light on several occasions during earthquakes. Last night there were both during the American Canyon 6.0 quake."*

<http://www.straight.com/blog/560791/strange-earthquake-lights-not-caused-ufos-unfortunately>

🕒 *"Rare lights seen near earthquakes had long been called UFOs."*

*"Sometimes called earthquake lightning, the lights can take "many different shapes, forms, and colors," says study coauthor [Friedemann Freund](#), an adjunct professor of physics at San Jose State University and a senior researcher at NASA's Ames Research Center."*

*"Freund says common forms of earthquake lights include bluish flames that appear to come out of the ground at ankle height; orbs of light called [ball lightning](#) that float in the air for tens of seconds or even minutes; and quick flashes of bright light that resemble regular lightning strikes, except they come out of the ground instead of the sky and can stretch up to 650 feet (200 meters)."*



***Bizarre Earthquake Lights Finally Explained***

⦿ *“They take various forms: globes, bands, rays, sheets, clouds. They tend to rise from the ground”*

<http://geology.about.com/od/earthquakes/a/EQlights.htm>

⦿ *“The most recent model suggests that the generation of earthquake lights involves the ionization of oxygen to oxygen anions by breaking of peroxy bonds in some types of rocks by the high stress before and during an earthquake. After the ionisation, the ions travel up through the cracks in the rocks. Once they reach the atmosphere these ions can ionise pockets of air, forming plasma that emits light.”*

[http://en.wikipedia.org/wiki/Earthquake\\_light](http://en.wikipedia.org/wiki/Earthquake_light)

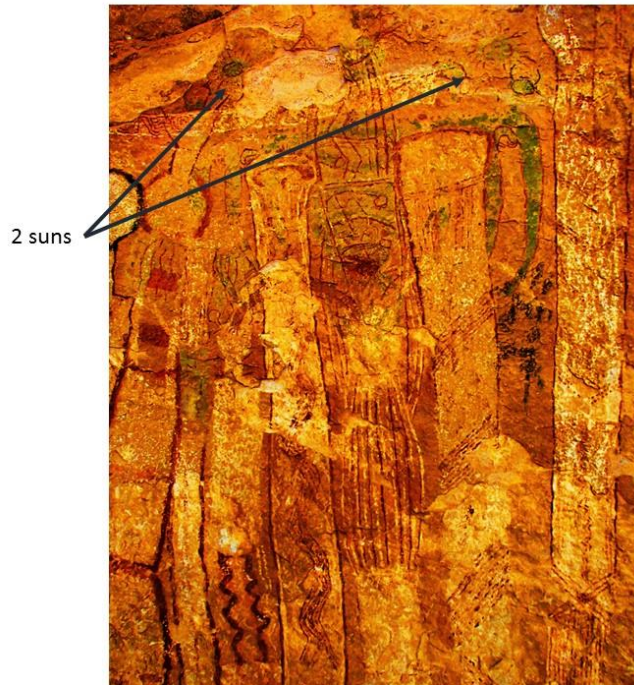
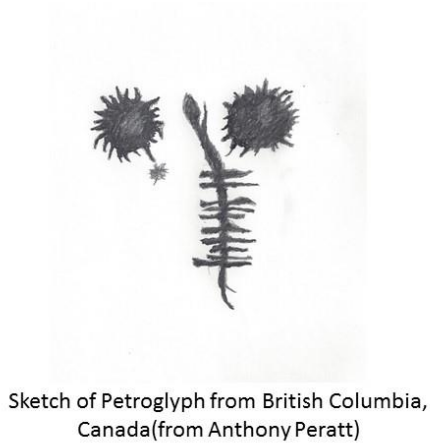
This would explain the 2 suns, however it wouldn't account for the green color. I then speculated that since I know that there are extensive deep uranium deposits in the Grand Canyon area, there would be radium in the area as a uranium byproduct. The earthquake lights could then appear green since an area of the cliff which probably contains radium could have been exposed due to erosion. I ran this theory by a friend, Anthony Peratt, PhD, who is a high energy physicist from Los Alamos Labs, NM who confirmed the possibility.



*Anthony Peratt*

The 2 Green Suns could also represent High-Current, Z-Pinch Aurora images seen in the sky caused by enormous Coronal Mass Ejections (CME's) and recorded on the Shaman's Gallery panel. Anthony Peratt has been recording these Z-pinch aurora images in rock art, which appear around the globe, for many years.

<http://www.theplasmaverse.com/pdfs/Characteristics-for-the-Occurrence-of-a-HighCurrent-ZPinch-Aurora-as-Recorded-in-Antiquity-squatter-squatting-man-Anthony-Peratt.pdf>



*2 Green Suns and to the left one of Anthony's recorded images from British Columbia, Canada*

Therefore, this panel, in addition to depicting images seen under the influence of hallucinogens, may indeed depict the objects seen in the sky either due to an earthquake and or a major Coronal Mass Ejection (CME). It is my opinion that these pictographs in the Grand Canyon could depict the events that led to the ultimate extinction of the Clovis people.

Furthermore, it is possible that the bent tail of the comet, mentioned earlier, could be showing the comet in close proximity to the earth following a CME.

Here is a link to striking video of a CME's effect on a comet heading toward the sun, where the tail is removed by a CME...

<http://guardianlv.com/2013/11/comet-ison-to-face-brutal-solar-storm-this-thanksgiving/>

If the comet was close to earth it could have been influenced by a CME directed by the Earth's magnetic field and therefore was recorded as a wavy tail in the pictograph. It is then possible that the combination of the CME as well as earth atmosphere caused the comet to explode, leading to the demise of the Clovis people. There wouldn't have been an impact crater if it exploded in high earth atmosphere. The Earth's atmosphere alone could have caused the explosion, but an extremely strong CME that penetrated the Earth's defense system could also have contributed some additional energy to trigger the explosion (another supporting link below).

🔴 *"And finally we have this, this discovery that Earth's magnetic field can be ripped open and our atmosphere laid bare to the solar wind, much like Mars."*

<http://wattsupwiththat.com/2008/12/16/earths-magnetic-field-has-massive-breach-scientists-baffle>

A quote about Thomas Gold, a famed Astrophysicist.

By: Anthony Peratt, PhD

IEEE TRANSACTIONS ON PLASMA SCIENCE, VOL. 35, NO. 4, AUGUST 2007

Characteristics for the Occurrence of a High-Current Z-Pinch Aurora as Recorded in Antiquity  
Part II:

⊙ *“A past intense solar outburst and its effect on Earth circa 8,000 BCE was proposed by Gold who based his hypotheses on astronomical and geophysical evidence [1]. The discovery of high-current Z-pinch patterns in Neolithic petroglyphs provides evidence for this occurrence and insight into the origin and meaning of these ancient symbols produced by mankind. These correspond to mankind's visual observations of ancient aurora if the solar wind had increased between one and two orders of magnitude millennia ago [2].”*

Directionality and Source; Anthony L. Peratt, Fellow, IEEE, John McGovern, Alfred H. Qöyawayma, Life Member, IEEE, Marinus Anthony Van der Sluijs, and Mathias G. Peratt, Member, IEEE

Since I have shown that this Comet image and Green Suns were painted at about the same time as these 2 postulated events, 1)an extraterrestrial object explosion and, 2)a major CME; could this ancient panel in the Grand Canyon depict a “Murphy’s Law Scenario (*Anything that can go wrong will go wrong*)” that happened nearly 13,000 years ago? 12,800 years ago a CME, a couple of orders of magnitude larger than the 1859 CME which caused telegraph systems all over Europe and North America to fail ([http://en.wikipedia.org/wiki/Solar\\_storm\\_of\\_1859](http://en.wikipedia.org/wiki/Solar_storm_of_1859)) , could have created intense auroral images that were recorded on the back wall of this cave by Clovis people in the Grand Canyon.

⊙ *“C.M.E. waves approach Earth like a slowly rotating shield. One end is positively charged, the other negative. With magnetism, opposites attract and like poles repel. If the wave's positive pole lines up with the Earth's positive pole, most of power of the storm will be repulsed, but if opposite poles line up, the plasma the waves are carrying will hit with full force.*

*On the day before the waves hit, a British astronomer observes a giant sunspot group light up with two massive flares. The second C.M.E. wave hit 18 hours later, allowing Green to calculate its speed—5,000,000 miles an hour—plowing into Earth at almost four times the speed of the February 15, 2011, C.M.E. waves.*

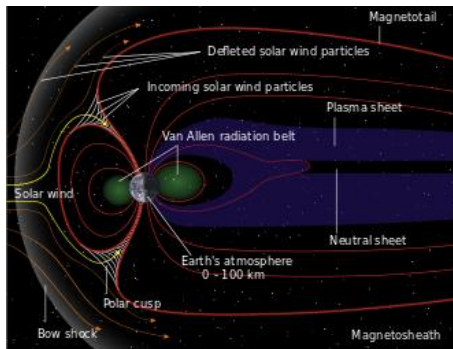
*Using the various reports, Green is able to reconstruct the 1859 storm. The accounts suggest that the poles of the C.M.E. waves were aligned, and instead of being repulsed, the waves hit with full power. The charged particles funnel down into the atmosphere, electrifying it like a giant neon sign, producing dazzling aurora displays. The storm is so intense, Earth's magnetic field all but*



*collapses. Millions of tonnes of plasma spill towards the equator and a powerful electric surge pulses over the globe.”*

*1859 CME from:* <http://www.pbs.org/wgbh/nova/space/secrets-sun.html>

At the same time a comet had its tail bent as it entered the supercharged magnetosphere of our planet. The comet could have then begin to break up from the intense ionized energy of the CME charged Van Allen Belt in the inner region of the magnetosphere, followed by an explosion in the upper atmosphere resulting in the ultimate demise of those who made the depictions on the panel.



<http://en.wikipedia.org/wiki/Magnetosphere>